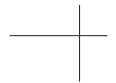


EML45 - MT

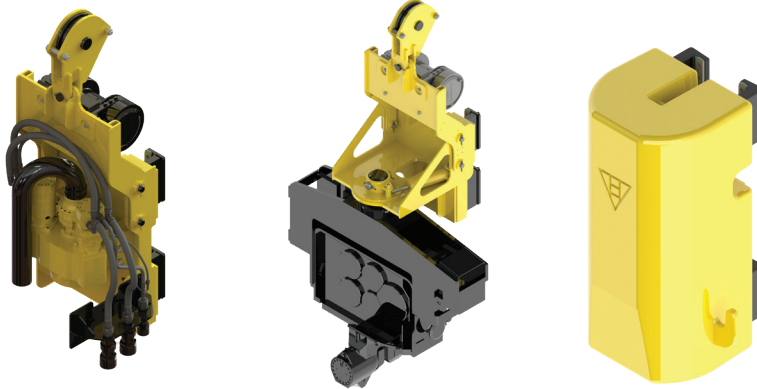
BERMINGHAMMER
FOUNDATION EQUIPMENT



Excavator Mounted Lead System for 45 Ton Excavator

DRILL VIBRATE IMPACT

18,000 ft lbs 24 kNm 651 in-lb 74 N-m 10,000 lb 4,536 kg



Base Machine	45 US ton	40.82 tonne
Total EML System Weight (excluding pile & excavator):	23,000 lbs	10,431 kg
Total Lead Length & Shipping Length	52-ft 5-in	16m
Shipping Height of Lead Assembly	7-ft 5-in	2.26m
Tool Stroke on Leads	40-42-ft	12.2 - 12.8m
Crowd (Option)	7,500 - 8,500 lbs	33 - 38 kN
Pullout Force	18,600 - 24,000 lbs	83 - 107 kN
Pile Line Winch - (single part)	12,000 lbs nominal lift capacity	53 kN
Working radius – Vertical Driving (center of excavator to center of pile):		
Approximate Maximum Reach (360°) (Dependant on Excavator Model)	26 ft	8 m
Approximate Minimum Reach (360°) (Dependant on Excavator Model)	18 ft	5.5 m
Side-to-Side Slewing	+/- 3 Degree	
Hammer Mass	10,000 lbs	4,500 kg
Impact Hammer Potential Energy (7ft)**	70,000 ft-lbs	95 kJ
Vibro Eccentric Moment (max)	651 in-lbs	74 N-m
Drill Torque (max)	18,000 ft-lbs	25 kNm



©Bermingham 2017 – Photos: Bermingham photo library

bfssales@berminghammer.com

* Geotechnical conditions may alter the pile proving capacity
**4 ft stroke is operational stroke, 7 ft stroke should only be used for pile proving

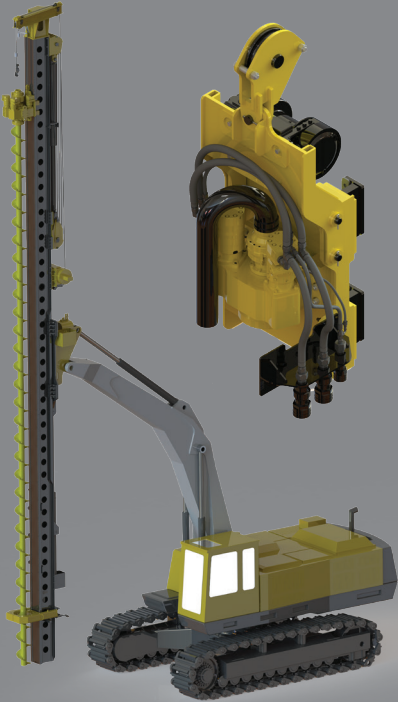
www.berminghammer.com

BERMINGHAMMER
FOUNDATION EQUIPMENT

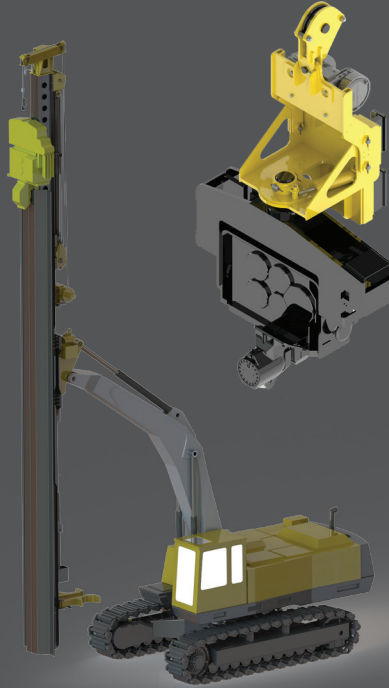


EML45

MULTITOOLOOL



DRILL



VIBRATE



IMPACT

This base lead system allows you to install a wide range of foundation and ground improvement techniques. It enables you to do it with a base excavator you probably already own. This is the most versatile deep foundation system on the market. One lead - 100's of different applications!

**PRE-DRILLING
ROCK SOCKETS
CFA PILES
CMC PILES**

**PIPE PILES
SHEET PILES
H-PILES
STONE COLUMN
CMC**

**PIPE PILES
SHEET PILES
H-PILES
CONCRETE PILES
TIMBER PILES**